

Trends of Cigar Use -Exclusive and Multiproduct- Among US Adult Population. Results from the PATH Study

Luz M Sánchez-Romero

Yoonseo Mok, Jihyoun Jeon, David T Levy and Rafael Meza

Friday October 18, 2024

Funding: K01CA260378 & 2U54CA229974 from the National Institutes of Health, National Cancer Institute and Food and Drug Administration (FDA)

*No tobacco interests to declare

Introduction

- **Cigars definition:** traditional premium or non-premium cigars, filtered cigars or little cigars, and cigarillos.
- Compared to cigarettes, **cigar use has seen a less dramatic decrease** over time.
- **Cigarette regulations & perceptions** = change in consumption patterns of combustible and non-combustible products.
- **Lower prices** make cigarillos and little cigars affordable to young people and other price-sensitive population groups.
- From 2009 to 2020, overall cigar sales increased mainly due to an **increase in flavored cigar sales** (3.5% annually).

Research Objective

Examine US cigar adult use patterns during the last decade, including concurrent use with cigarettes and e-cigarettes

Cigars use

- PATH = Waves 1-6 (Sep 2013 to Nov 2021)
- Cigar, cigarette and e-cigarette: **never, current and former.**
- **Cigar** = traditional cigar, cigarillo or filtered cigars use
- Sociodemographic differences in cigar use by:
 - **Age groups** (18-25, 26-34, 35-54, 55+)
 - **Sex** (male, female)
 - **Race/ethnicity** (Non-Hispanic [NH] White, NH Black, Hispanic, NH Other)

Cigar, cigarettes and e-cigarettes use

Cigar

Current : “Yes” to ever fairly-regular use AND past 30-day use of at least one cigar type

Never : “No” to ever fairly- regular use for each of the three products

Former : complement

Cigarette

- *Current* : smoked ≥ 100 cigarettes in their life time AND any use in the past-30 days
- *Never* : smoked ≤ 100 cigarettes in their lifetime OR those who never smoked
- *Former* : complement

E-cigarette

- *Current* : “Yes” to ever fairly-regular use AND any use in the past-30 days.
- *Never* : “No” to ever-fairly-regular use
- *Former* : complement

Concurrent cigar use with cigarettes and e-cigarettes

Sample Description

- Observations: 30,000
- Males (52%)
- Age groups: 18-24 (12%), 25-34 (17%), 35-54 (32%), 55+ (38%)
- Race/ethnicity: Hispanic (24.%), NHB (25%), NHO (22%), NHW (28%)

Statistics - weighted prevalence and 95% confidence intervals for cigar use:

- Exclusive
- Dual
- Polyuse

Current/Former Cigar and:

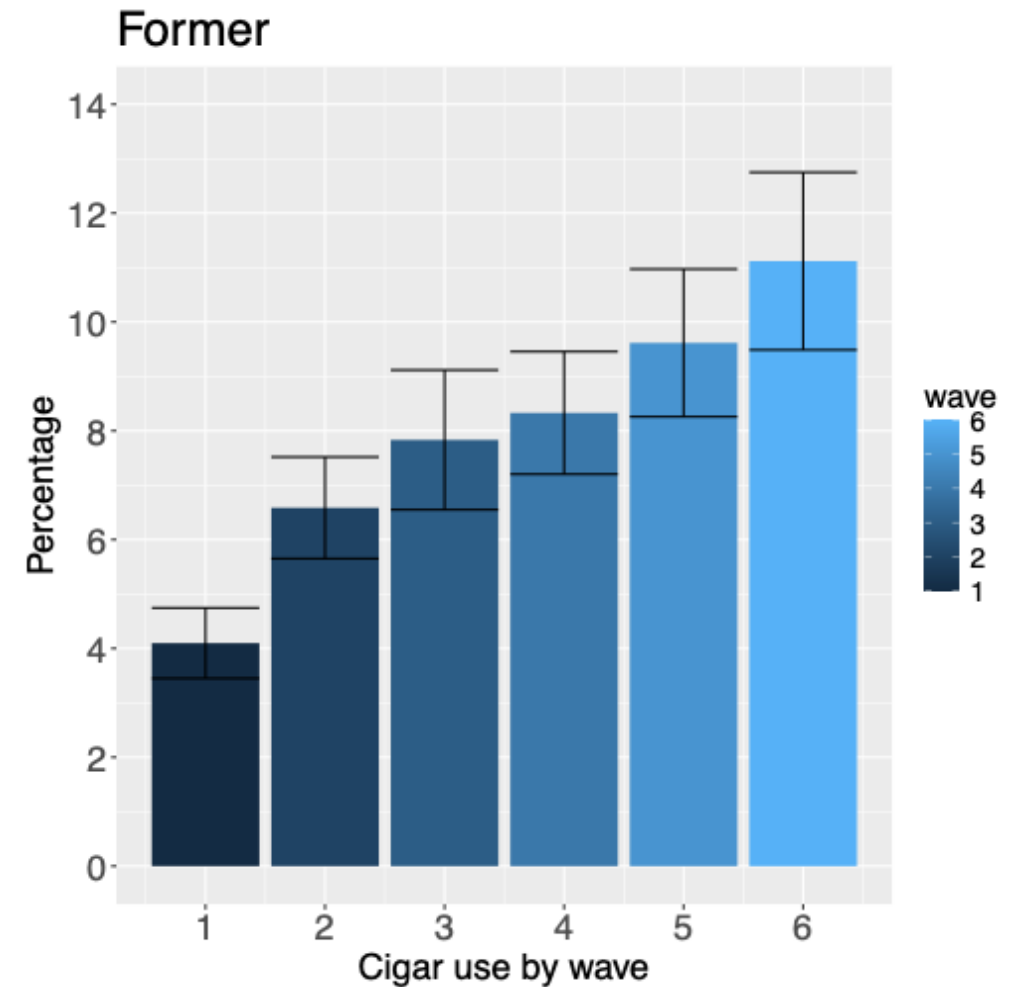
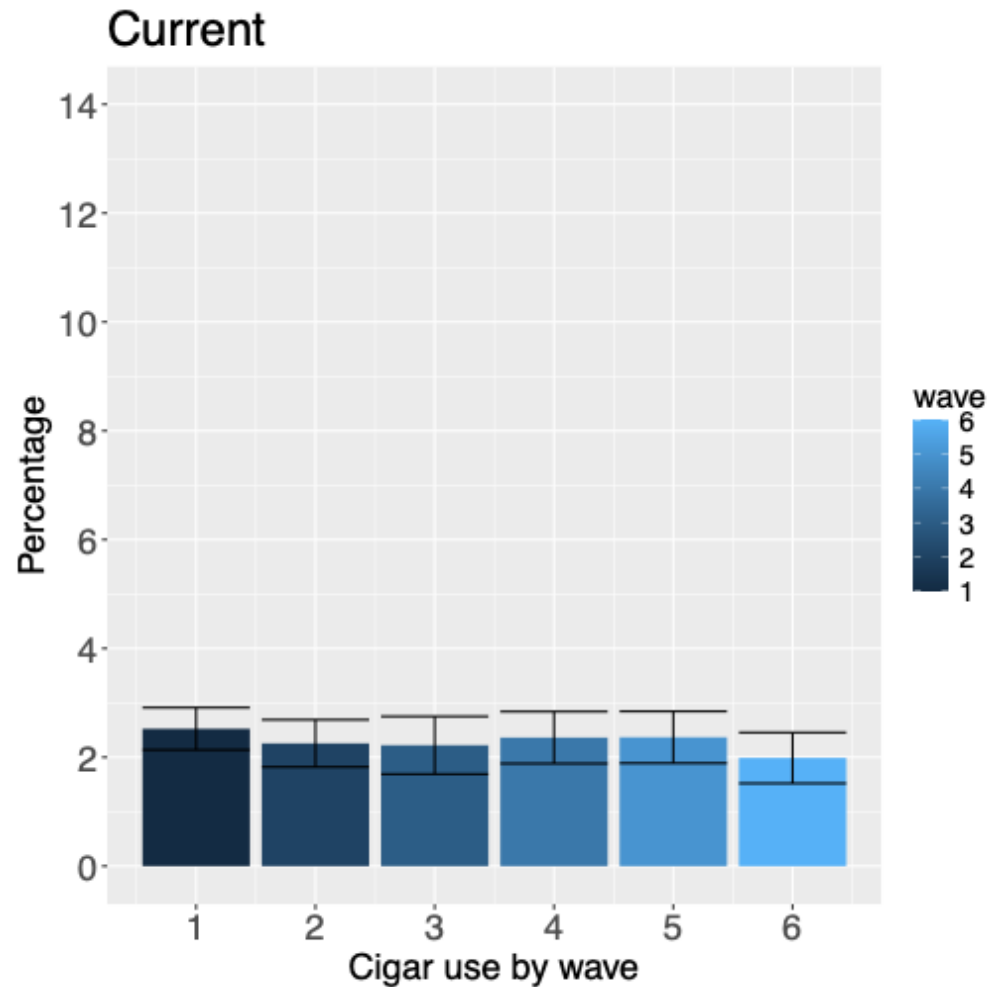
- 1) Current cigarette/current e-cigarette
- 2) Current cigarette/former e-cigarette
- 3) Current cigarette/never e-cigarette

- 4) Former cigarette/current e-cigarette
- 5) Former cigarette/former e-cigarette
- 6) Former cigarette/never e-cigarette

- 7) Never cigarette/current e-cigarette
- 8) Never cigarette/former e-cigarette
- 9) Never cigarette/never e-cigarette

Overall Cigar Use

Current Cigar use: "Yes" to ever fairly regular use + past 30-day use of at least one cigar type



Current Cigar by Concurrent Use



Current Cigar use by Concurrent Use

Dual and polyuse combined : 71.0% (w1) to 76.4% (w6) of all current cigar users

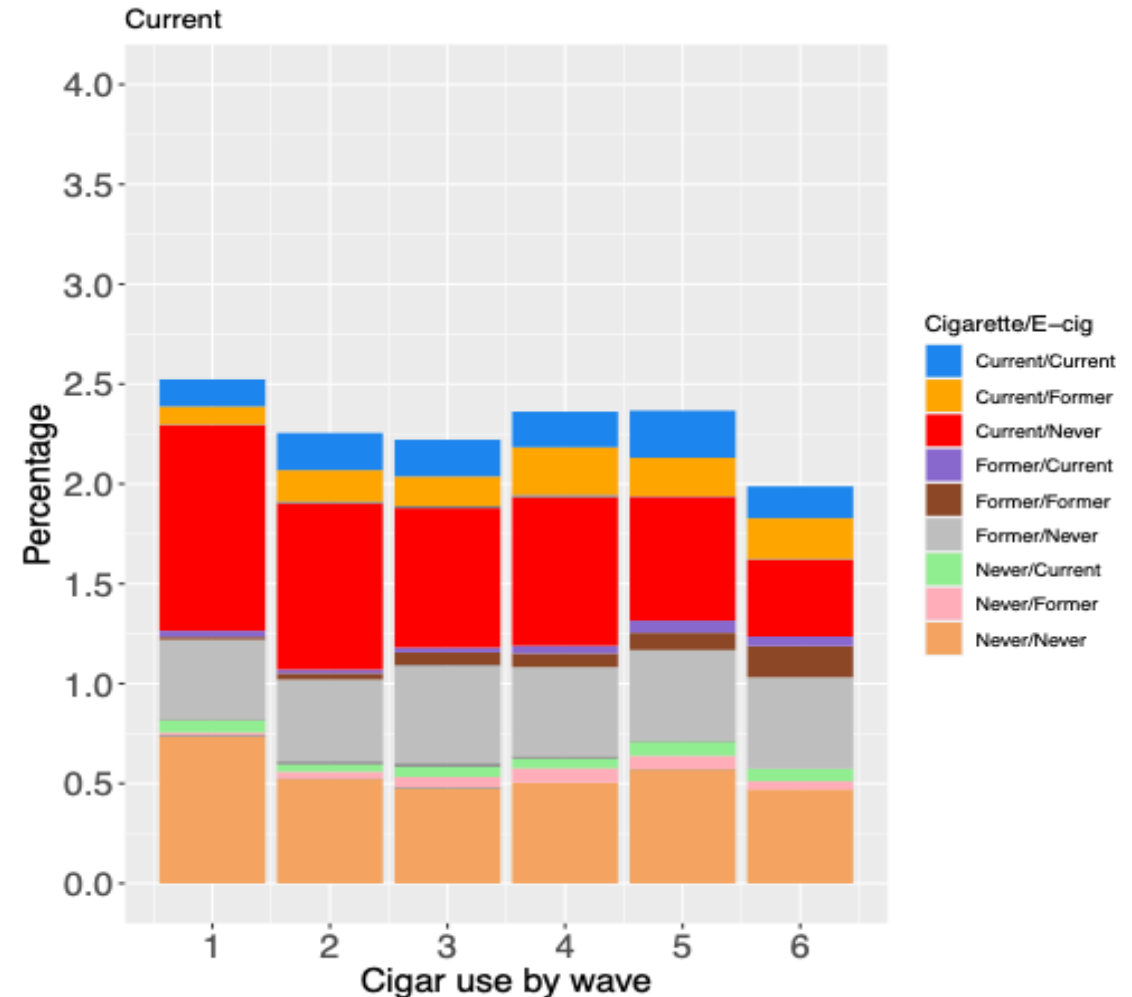


decreased from 50.0% (w1) to 39.0% (w6)



increased from 9.0 % (w1) to 13.0% (w6)

- **Most common** concurrent use pattern was **current cigar/current cigarettes (never e-cig)** despite a significant **decrease**.
 - Wave 1: 1.0% (95% CI, 0.9%-1.1%)
 - Wave 6: 0.4% (95% CI, 0.3%-0.5%)

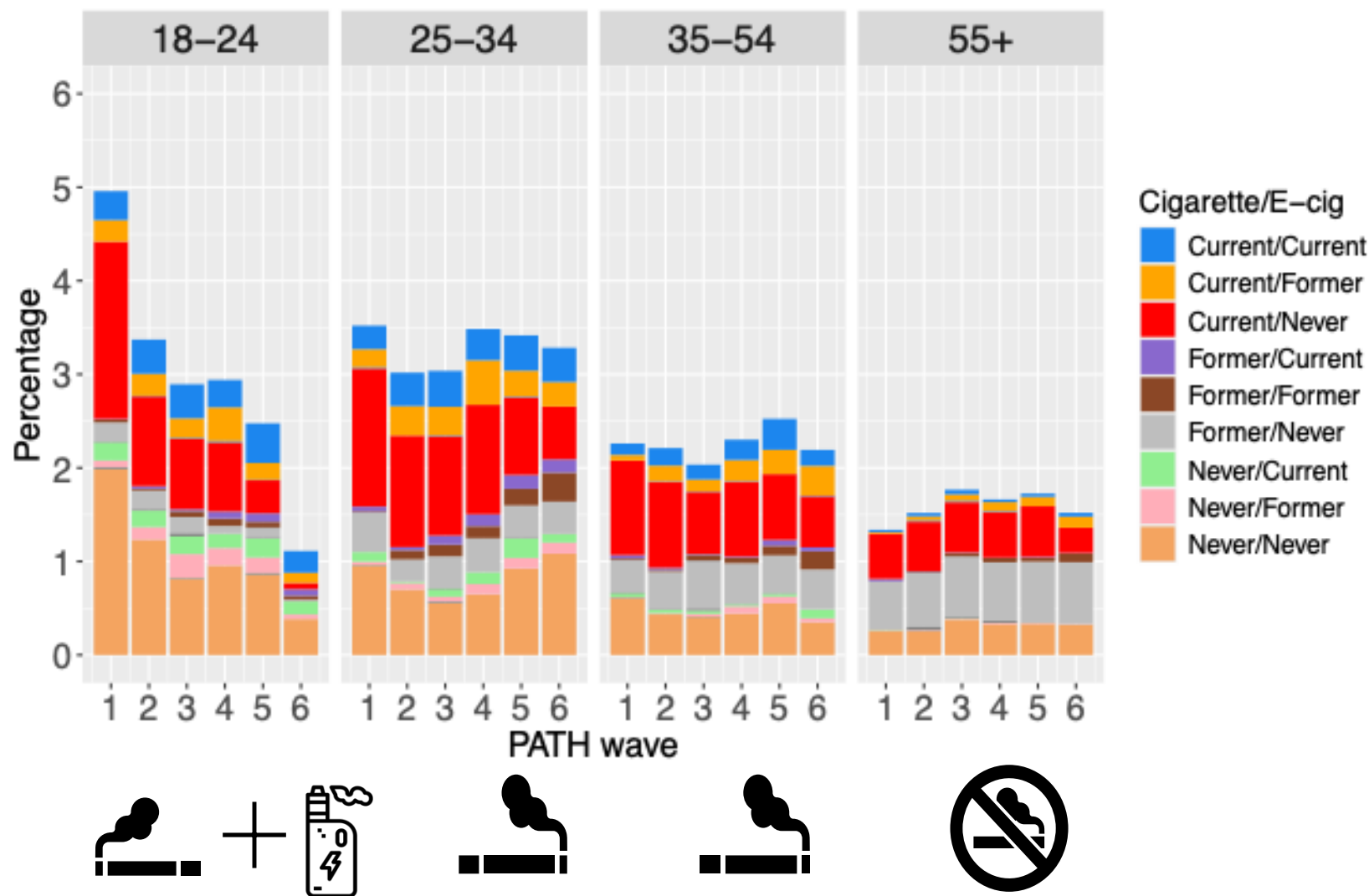


By Age Group

Use in ages 18-24 decreased from 5.0% (w1) to 1.1 % (w6)

Highest concurrent cigar use across waves:


- **18-24:** current cig/never e-cig (w1) to polyuse (w6)
- **25-54:** current cig/never e-cig (w1-w6)
- **55+:** former cig/never e-cig (w1-w6)



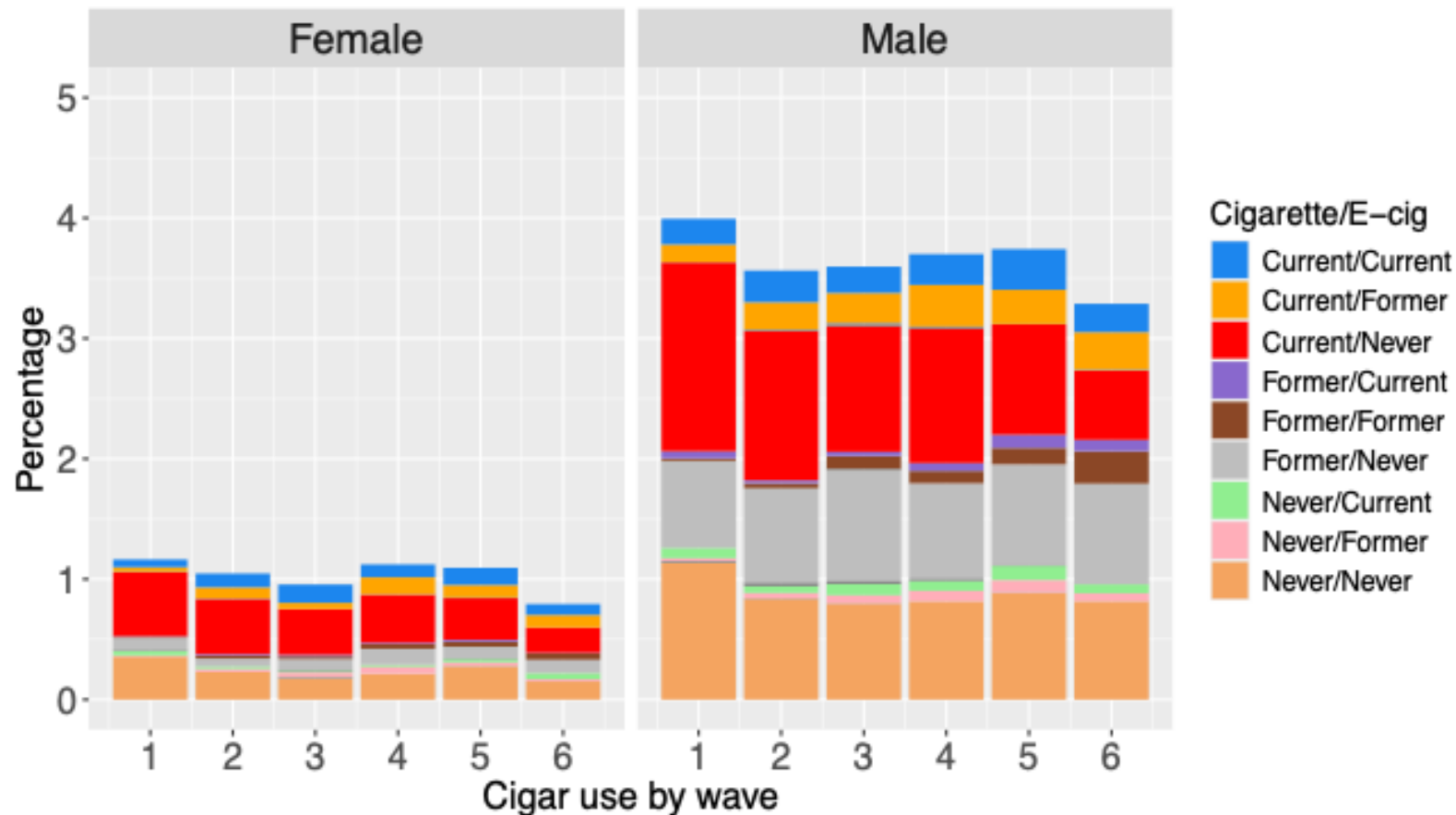
By Sex

Cigar prevalence remains stable for males and females


decrease in current cigar/current cig/never e-cig

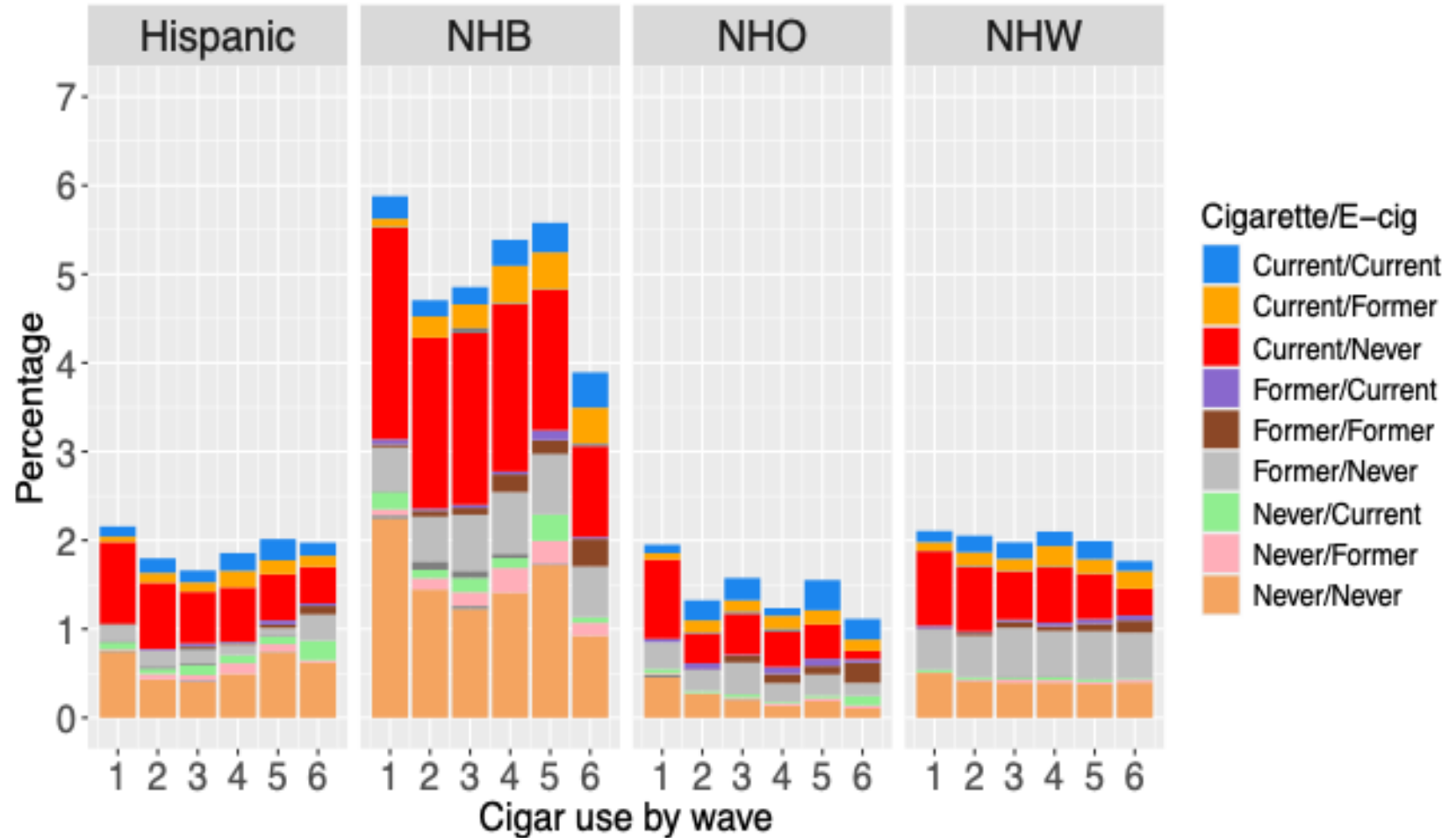
Increase in current cigar +

 current cig/former e-cig


 former cig/former e-cig



By Race/Ethnicity

- Overall highest prevalence in NHB but **declined** from 6.0% to 4.0%.
- **Wave 1**- current cigar/current cigarette/**never e-cig**
- **Wave 6** – current cigar/
current or **former** cigarette/
former or current e-cig



NHB: Non-Hispanic Black
 NHO: Non-Hispanic Other
 NHW: Non-Hispanic White

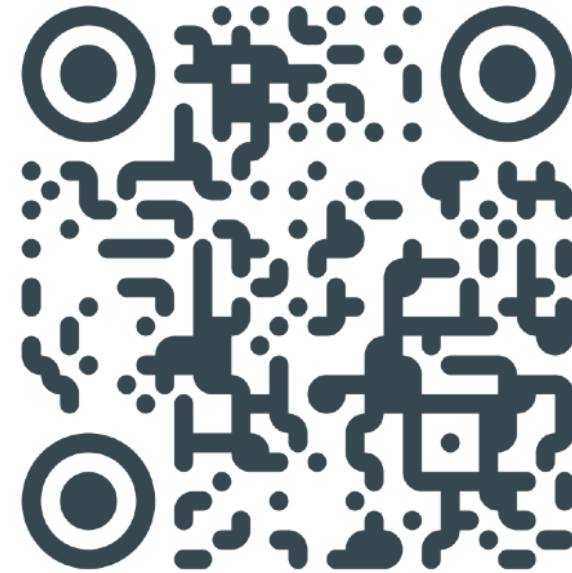
Conclusion

- **Dual and polyuse** has remained as $\geq 70\%$ of those current cigar users.
- Cigar smoking prevalence remains relatively stable but there's an **increase in concurrent ever e-cigarette use.**
- Cigar use has **decreased** significantly **among 18–24-year-olds.**
- **NHB** cigars use has decreased but **remains the highest** across race/ethnicity groups.

Implications for FDA's tobacco regulatory authorities.

- **Need for Comprehensive Research on Cigar Use**
 - Understand trends in cigar use, co-use with other products.
- **Broader Policy Considerations**
 - Additional research is needed on how e-cigarettes relate to cigar use (*initiation/cessation/transitions*) and the influence of current tobacco regulations.
- **Evaluation of Flavor Ban Impact**
 - Study the synergistic public health effects of a cigar flavor ban, in combination with flavor bans on cigarettes and ENDS.

TCORS- Center for the Assessment of Tobacco Regulations [CASToR]



Scan Me